



"To The Tyrants Never Yield!"

# THE STRAGGLER

NEWSLETTER OF THE TEXAS RIFLES  
ISSUE NO. 35 JULY 1991



## COMMANDER'S DISPATCH

The event we have waited for for so long is nearly here. This newsletter should give you the latest information on Wilson's Creek. We should field a company which will be as large as the one we had at Gettysburg. If everyone shows up as they say they will, we will have 52 officers and men. This should make everyone feel very proud. I've popped a couple of buttons myself.

The bus is full! Let's give another rousing cheer. I personally want to thank everyone who signed up for the bus. This was a bit of a gamble for us. I thought we could fill it, but you never know for sure. I think we will have a lot of fun on the way up. The trip back will be a lot better too. I don't know any other group which could do this. The exact location you can meet the bus in Austin, Waco or Dallas is in this newsletter. Please finish reading this before you go bonkers looking for the pick up locations. If you have any questions concerning the bus, the bus pick up locations or the meaning of life, call Jeff Hunt at (512) 416-1744. Let me know what he has to say on the last part.

Now a final reminder about the bus, the amount of space on the bus and a chance to review the meaning of a couple of words or phrases you may want to remember. If you are driving up, there is a lesson in this story too. Think carefully about what you are taking. THERE IS LIMITED SPACE ON THE BUS. Limited space means NOT A WHOLE LOT OF ROOM TO FIT A LOT OF JUNK !!! You may also have to CARRY (CARRY means huff, puff and sweat a lot and possibly do this a long way) whatever you bring into camp. At this time I don't have word back from my inquiries on the logistics of where the camp is and where they will allow cars/buses to unload. In other words, the camp and the drop off area may be two completely different places. So before you bring that steamer trunk, re-read the definition of "limited space" and "carry" in Webster's or as described above.

In closing, I look forward to seeing all of you on the field of honor again in August. May God grant all of us safe passage during our journey to and from Missouri. I have the honor to be your Captain, and

Your most obedient servant,

*G. Jim E. Hunt*



PORTRAITS OF CONFEDERATE PRIVATES OF THE WEST.



# CALENDAR OF EVENTS



PLEASE LET YOUR REGIONAL DIRECTOR KNOW WHICH EVENTS YOU PLAN TO ATTEND. THIS INFORMATION IS VITAL FOR PLANNING PURPOSES.

\* WILSON'S CREEK: August 9 - 11, 1991 near Springfield, Missouri. See related articles in this issue.

THE TEXAS RIFLES 1991 HARVEST BALL: November 16, 1991 at the Driskill Hotel in Austin. See related article in this issue.

NOTE: An \* indicates a TEXAS RIFLES MAXIMUM EFFORT EVENT at which most of the officers and NCO'S will be in attendance. At the other events, attendance by TR members may be lower, and you may be on your own.

## TR TID BITS

### WILSON'S CREEK CAMP KITCHEN

The ladies of The Texas Rifles will be operating a camp kitchen at Wilson's Creek as planned, despite the complex logistics involved. Seven meals will be served as follows: Lunch on Friday, Saturday and Sunday (Haversack rations, including homemade beef jerky, peanuts, raisins, hardtack and fruit); Friday Dinner: (fried chicken, baked beans); Saturday Dinner (stew); Saturday and Sunday Breakfast (Oatmeal with fruit, coffee, homemade muffins and cookies). Gatorade, ice water and cool oranges will be served throughout the weekend. The price for all this is \$15.00 which includes a reusable ration bag (like those you received at Pleasant Hill in 1990).

The ladies are planning to serve a maximum of 55 persons—preference will be given those who indicated on their postcards that they desired to participate in the camp kitchen. Others will be served on a first come, first served basis. If you have not already signed up, call Ana Draa at (713) 896-1023 ASAP.

### TEXAS RIFLES HARVEST BALL

The Texas Rifles 1991 Harvest Ball will be held Saturday, November 16, 1991 at the Driskill Hotel in Austin. The cost is \$40.00 per person and includes a period dinner along with a full night of period dancing and music featuring Norman Hughes and his band. The \$5 extra is to cover the increased costs associated with transporting Norman and the band from Denver to Austin and an increase in the cost of the meals. The entire mezzanine of this 1870's hotel (including ballroom, private bar, meeting rooms and dining area) will be dedicated solely (i.e., no public access) to our use during the ball. Members of The Texas Rifles only can sign up until August 15. From August 16-September 15 reservations will be limited to those who attended the last ball in February 1991. If any places remain thereafter, they will be filled by invitation. Make your reservations by sending a check to Ana Draa. Contact Vicki Betts, a member of our Authenticity Committee, with questions concerning appropriate attire (men's and women's) at (214) 592-5105.

Ana has negotiated a special room rate of \$55.00 (\$20 less than The Menger) for up to two persons in a room; \$10.00 per each additional person; maximum of four people per room. The Driskill will hold our block of rooms only until October 15, so make your room reservations ASAP. Be sure to tell them you'll be attending The Texas Rifles Ball in order to get the special rate. Remember it will be a football weekend in Austin, so you need to act promptly if you want to have a place to stay.

Additional details on the Ball will appear in forthcoming issues of The Straggler and The Reenactor's Companion.

### SCOTT SWENSON'S ADDRESS

For those of you who have been dying to correspond with Scott, but didn't know how to reach him while he participates in the filming of The Last of Mohicans this summer take heart. His address is #17 Sleepy Hollow Ln., Swannanoa, N.C. 28778; his phone number is (704) 298-9061.



**WHERE TO CATCH THE BUS TO WILSON'S CREEK  
AND OTHER VALUABLE INFORMATION**

By Jeff Hunt

Below and on the following pages you will find information on where to catch the bus in Austin, Waco and Dallas. Captain Eastland needs to hear from everybody before the end of the month exactly and definitely where they are going to catch the bus. We don't want to leave anybody behind. The bus will leave Austin at 8 pm on Thursday night Aug. 8. Please be at the bus stop no later than 7:15 PM. It will pick up people at the WALMART parking lot off IH35 between Stassney and Ben White.

In Waco the bus will load at the HEB parking lot of Waco Drive, where you turn to go to Bellmeade and get on U.S. 84. The bus will arrive in Waco at approx. 10 PM. Be there early! Time costs us money on this trip.

In Dallas the bus will pick people up in the parking lot of the Federal building in North Dallas off Midway drive. The bus will arrive at this location at approx. midnight, Again be early.

At none of these locations will the owners of the parking lot take responsibility for your autos. You leave your car behind you AT YOUR OWN RISK. However, all of these locations have been carefully selected and should be safe.

Bring whatever goodies you want for drinking and snacking both going to and coming back from the event with you, as the bus will not stop for these purposes. Alcohol is strongly discouraged. SMOKING WILL NOT BE PERMITTED ON THE BUS. On the return trip the company is arranging to have fried chicken (3 pieces with rolls) provided as an after event meal. Everyone will be asked to contribute \$3 to this effort if you want to eat. IF YOU DON'T WANT THIS MEAL LET GILL EASTLAND KNOW IMMEDIATELY, OTHERWISE WE'LL ASSUME ALL BUS RIDERS WANT THE CHICKEN. One additional note: Please be sure to clearly label all of your stuff to make it easier to unload the bus. We don't want 40 men having to look at every musket and tent to figure out what belongs to whom. Bring all the tents you want, but go light on camp furniture, both to save space on the bus and for realism -- the Rebels had been on the march for several weeks prior to the battle and this is the poor Trans-Mississippi army we're talking about here not General Beauregard's pampered Virginia troops.

The bus will return to the same locations where it picked people up; times are approx. midnight in Dallas (on Sunday night), 2 AM in Waco and 4 AM in Austin. If you have any questions call Lieutenant Hunt at 512-416-1744. And a final reminder your money for the bus needs to be in NOW!

**BELT BUCKLES AVAILABLE**

The Wilson's Creek event is close upon us. Many of our battalion's people are acquiring early war uniforms and equipment especially for this event. With this in mind, I am offering a special deal for the men in the 1st Battalion.

For several years I have been selling sheet brass rectangular belt plates. These are 2"x3" in size and are non-descript. They have three hooks on the back and will fit most of the leather belts that our folks use. These are really great early war buckles, and are actually good for impressions throughout the war.

These belt plates usually sell for \$10.00, post paid. However, I am offering them to our people at the WHOLESALE price of \$5.00 (post paid) on orders of TEN OR MORE that are shipped to a single address at one time.

I must say that the use of these plates is not encouraged or discouraged by either battalion or brigade, but that I am offering them on my own as a means of aiding our folks to gain a more uniform early war impression if they desire it.

PIERCE'S IRON & ARTIFACTS  
4408 N. HIGH STREET  
GREENWOOD, MS 38930  
(601) 455-3440

## THE CIVIL WAR LADY

By Vicki Betts

The long-awaited premier issue of "The Civil War Lady: Women in Reenacting" hit area mailboxes on June 21 and promises to be a great addition to information sources already available to women involved in Civil War living history.

This issue features "Defining Historical Accuracy" by Juanita Leisch, author of "Ladies Wear Daily" and "How to Create a Civil War Dress" by Kathleen York, author of the "Civil War Ladies Sketchbook" series. Kathleen York also contributed "Women in Civil War Reenacting" and Juanita answered questions in "Advice for Young Mothers." Other articles include "A Guide to Researching Womens' Clothing and Fashions", "Museum Collections as a Resource for Clothing", and "Crinoline Commentary", as well as continuing columns such as "Through a Soldier's Spectacles", "Excerpt from Godey's", "My Museum Find" and "Bulletin Board."

"The Civil War Lady" is profusely illustrated with photographs, drawings, cartoons and cartes de visites, and is full of advertisements of interest to women. The magazine is published bi-monthly and costs \$15.00 per year or \$3.00 per issue. Send your subscription now to: The Civil War Lady, 622 3rd Ave S.W., Pipestone, Minnesota 56164. This publication deserves to succeed!

## DRILL BITS

By Jamie Bain

There are a few maneuvers where the direction and/or formation of the company changes rapidly. Examples of these include wheels, turns and column-into-line movements. During these maneuvers, it is vital that everyone in the company understand what the expected outcome of the maneuver is, and how to achieve it in the quickest and most orderly manner.

Here's a simple rule that will work in any maneuver to get it done quickly and help the entire company keep its alignment: When the company begins a maneuver, understand where the company starts, and where it should end up. After that, just concentrate on where you have to go. You can usually do that by concentrating on a single person, rather than the entire company.

During a wheel, don't try to see all the way to the end of the line, just stay right with the man next to you.

You don't need to know how far from the end of the company you stand to know how many steps you take a 45 degrees before turning again when the company makes a turn. Just remember that when the man next to you turns, take one more step, then turn yourself.

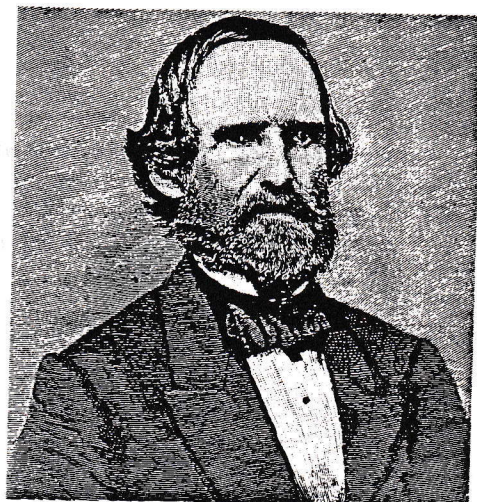
By files into line seems the hardest, but its actually one of the easiest because it's really done in pairs. Only two people are moving into a rank at the same time. The only thing to remember is which one of you has to get on the line first. If we're going to the right, the no. 1 man goes first; if to the left, then the no. 2 man goes first. The man who has to be in line first has the right of way, so he gets to step in front of his partner.

Finally, company into line. Again the easiest thing to do is know who you stand next to when the company is in line. Then find where that man is when the company is in column. We almost always form the company from the right, so for now let's look for the man who stands on our right. If you're a 1, then your man is right in front of you and one man to your right (unless of course you're in the first set of fours). If you're a 2, then your man is immediately on your left. Once the movement begins, concentrate on your one man, keep on his left, and the entire line falls naturally into place.

By understanding the whole picture, but only focusing on your small part of it, complicated movements suddenly become simple. At Wilson's Creek, let's show everyone how simple it is for a great company (namely us) to perform any and every maneuver.



402 N. Second St.  
Richmond, TX 77469  
(713) 341-6030



**Brig. Gen. Benjamin McCulloch,  
Commander of Confederate Troops in  
Arkansas and the Indian Territory**

June 12, 1991

To the Company Commanders, Battalion Staff,  
and newsletter editors  
First Battalion, First Confederate Brigade

Dear Friends,

I want to apologize for the dearth of information you have heard from regimental headquarters, but the colonel has taken a wife and domesticity has routed the regimental call until now. But now it is time to defend our South's upper border, and I know that every man under your command will rendezvous with the Regiment on the March to reconquer Missouri for the South. More information on the Wilson's Creek event follows in this letter.

But first I wanted to add to the comments made by Sergeant Major Wakefield in his letters to each company commander after the recent National Tactical at the Land Between the Lakes. I am sure most, if not all, of you have read the published reports to supplement the personal experiences of those of you in attendance. Although I was unexpectedly called upon to command the entire brigade, I truly can say that my heart remained with my comrades in this battalion. Being a part of the men of this battalion perhaps has spoiled me; unfortunately few other units on the field--or in the brigade--showed the same steadfast dedication to truly experience campaign life of the Confederate soldier or to be so responsive to the orders from the leaders of the division and brigade. While others were complaining about various real or perceived shortcomings of the tactical, you made the best of every situation. It is further to your credit that you had a higher percentage of men present on Sunday morning than any other group of which I am aware. I do not intend to be separated from you again to serve in any other capacity. I am proud to be part of you, to lead you, and to count you as my friends.

Following the Tactical, each of the two wings of the battalion were challenged to get together at a wing muster prior to Wilson's Creek. Thanks are due to east-wing commander Gary Pierce for organizing the attendance of the First Tennessee, the Confederate Guard and Cleburne's at the event at Brice's Crossroads, June 8-9. Although my car was packed to travel to this event--and my wife already in Mississippi--I regret a minor family emergency precluded my attendance. For this I apologize, but have heard very encouraging reports of the operation of this wing under Major Pierce in a battalion commanded by Bill Rambo. The west wing under Clive Siegle is scheduled to muster at Lake Whitney, Texas on June 22-23. Thanks are due to Captain Eastland of the Texas Rifles for organizing this effort.

The positive response to the wing musters has encouraged me, and in consultation with the other field officers, I would like to get the entire battalion together in the field after Wilson's Creek and before the end of 1991. As with the wing musters, this could be at an existing event or at a specially-organized muster. The only geographically-centered event publicized in the Camp Chase Gazette thus far is the Battle of Cloutierville, LA, October 11-13. If anyone has a proposed event or site for a muster, please bring as much information as you can to Wilson's Creek, and we will decide. Also in the vein of local/regional events, I would like to extend an invitation to all of you to attend my museum's festival, Texian Market Days, October 26-27, at the George Ranch Historical Park near Houston. The Texas Rifles will be organizing a program portraying the fall of 1861--raising of troops, etc. Contact me or Gill Eastland if you are interested.

Attached to this letter is an updated list of the Field and Staff and Company leaders of this battalion. Two new companies on the list are the 12th Texas Infantry and the 19th Texas Infantry. I know each of you join me in welcoming these two fine companies to our color line, and I hope each of you will stop by and meet their



captains, Gary Canada and Brooks Wester, and their men at the first opportunity. Kudos are due to Adjutant Scott Swenson who spent the time to talk to them about our battalion and invite them to join. Both companies have ordered overshirts to outfit themselves in comparable fashion to our other companies, and their enthusiasm for participating with us is a boost to all of us. Gentlemen, we hope you will be as proud in our ranks as we are proud to welcome you.

Sergeant Major Wakefield and Wess Rogers in New Mexico are also actively pursuing prospects for additional enlistments into our ranks. Please thank them for their efforts, as well as redouble your own to find individuals, groups, or whole companies that would like to serve with the First Battalion of the First Brigade.

The Battle of Wilson's Creek is the next maximum effort event for the Battalion and the Brigade. This 130th anniversary event is scheduled for August 9-11 on a site adjacent to the national battlefield park. By now I presume each company has sent their registration information directly to the event. Please send a copy of the registration list to me for the battalion's records. Present estimates is that our battalion will field 7 companies totaling about 200-210 men--a wonderful prospect.

Attached are 1st Confederate Brigade General Orders #1 and #2. As per order #1 we have an additional major position in the battalion for the Wilson 's Creek event, a one-time ad-hoc appointment. I am also appointing Jay Garrett to the post of Battalion Principal Musician, charged with organizing the battalion 's field music of drums, fifes, bugles, etc. Additionally, I am appointing Patrick Craddock of Cleburne's, Donnie Frazier of the Texas Rifles, and one additional NCO to be a permanent color guard for our battalion for the remainder of 1991. They are charged with determining the colors to be carried, appointment of any additional color guard members on an event-to-event basis, and all other duties required to field a first class color party. Adjutant Swenson is charged with the faithful implementation of General Order #2 detailing morning reports and ammunition returns for the army.

I sense an excitement among the men for the early-war impressions to be presented at Wilson's Creek. Virtually every company has developed special uniform and equipment guidelines to make this event special--such as overshirts and/or civilian clothing, flint-lock muskets, belt knives, pistols, and other militia accoutrements. Pearce's Arkansas troops were described in July of 1861 as being "well armed," presumably with a combination of flint and percussion military muskets from the Little Rock Arsenal and "domestic rifles" used in civilian life. Let's us also endeavor to implement the serious first person roles that will truly make the event special, and once more show our fellow soldiers the quality of men that compose the first battalion. The Tactics manual to be used by our battalion at the event will be Hardee's Tactics, based on correspondence from General Pearce of the Arkansas State Troops to President Davis, May 13, 1861: "Can you send us 500 copies of 'Hardee's Tactics'? The Convention will probably order some printed, but we need them at once." Any modifications--based on Scott 's or Gilham's Tactics--to the loading commands to accommodate flint lock muskets will be at the discretion of each individual captain.

There has been an indication from the event that they wanted each Confederate unit to bring two sets of uniforms and equipment. Their theory is that in some phases of the battle, they will be highlighting the well-uniformed 3rd Louisiana, and in others the poorly-equipped Missouri State Guard. A correlation, I presume, is that many other battalions' troops have no other uniform than their mid-war shell jackets. We have requested clarification of this rumor, and if it is true plan to protest, for several reasons:

1. these scenarios do not account for the roles that Arkansas state troops played in the battle;
2. I find it difficult to do more than one good impression in a weekend;
3. the effort and expense you have gone to with your battleshirts would be to less effect;

I intend to suggest that our battleshirt/civilian impressions will work for whatever scenario they have except portraying the 3rd Louisiana--and they should have ample mid-war looking, uniform, troops on hand to portray this unit. Stay tuned for more rumors.



At Wilson's Creek this battalion will portray the [5th] Regiment of Arkansas State Volunteers, commanded by Colonel [Tom P. Dockery]. Attached is a three-page history of the Arkansas Division, plus a one-page excerpt from the Texas Rifles newsletter regarding mail call ideas. Tentative company assignments are as follows:

Company A: Cleburne's, Captain Jones  
Company B: Confederate Rifles, Captain Otott  
Company C: 1st Tennessee Infantry, Captain Greene  
Company D: Confederate Guard/4th Texas Volunteers, Captain Branson  
Company E: 19th Texas Infantry, Captain Canada  
Company G: Texas Rifles, Captain Eastland  
Company H: 12th Texas Infantry, Captain Wester

The order in line of battle is as follows:

Otott	Eastland	Canada	Wester	Greene	Branson	Jones
B	G	E	H	C	D	A

The schedule published by the event is as follows:

Friday, August 9: 8:00 a.m. Camps open to public  
7:00 p.m. The Ray Cornfield fight

Saturday, Aug 10: 8:00 a.m. Camps open to public  
9-11 a.m. Infantry drill  
2:00 p.m. Sigel's advance and rout (that's Sigel not Siegle!)

Sunday, Aug 11: Pre-dawn tactical has been cancelled  
9:00 a.m. Camps open to public  
1:00 p.m. The battle of Bloody Hill

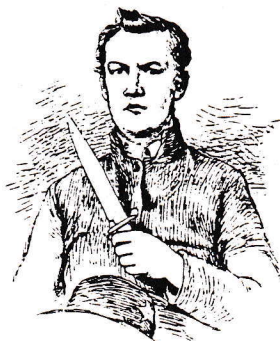
#### Review of Items for Company Commanders' Action:

- I. Bring suggestions for fall/winter muster to Wilson's Creek
- II. Send photocopy of company registrations for Wilson's Creek to Michael Moore by July 15
- III. Send the names and addresses of your units' NCO's to Sergeant Major Wakefield if you have not already done so, as per his March 20, 1991 letter to the company commanders

Once again, I look forward to serving with you on the Field of Honour. Thank you for attention to these details and orders, and for communicating them to the men in the ranks. If I can be of service to any of you, please feel free to write or call. Dust off your uniforms; clean those muskets; kiss your sweetheart goodbye; and join your comrades in the field.

I shall be waiting there for you,

Michael R. Moore, Colonel  
First Confederate Battalion



"BLOODY HILL," FROM THE EAST. FROM A RECENT PHOTOGRAPH.

First Division, Army of Arkansas  
at the Battle of Wilson's Creek, Mo.  
August 10, 1861



**Brig. Gen. N. Bart Pearce, C.S.A.**  
**Commander of the Arkansas State Troops**

Field Organization:

Division Commander: Brig. Gen. N. Bart. Pearce  
Staff: Major A. H. Cline, ADC  
" " Commissary \_\_\_\_\_ Grace  
- " Surgeon \_\_\_\_\_ Smith  
- " Capt. \_\_\_\_\_ Jefferson, ADC

Infantry Brigade:

3rd Regiment, State Troops: Col. John R. Gratiot, Lt. Col. David Provence,  
Maj. \_\_\_\_\_ Ward. 629 rank and file.

4th Regiment, State Troops: Col. J. D. Walker, Lt. Col. \_\_\_\_\_, Major \_\_\_\_\_

5th Regiment, State Troops: Col. Tom P. Dockery, Lt. Col. \_\_\_\_\_ Neal, Major \_\_\_\_\_

Cavalry Force:

1st Cavalry, State Troops: Col. De Rosey Carroll, Lt. Col. \_\_\_\_\_, Major \_\_\_\_\_

Independent Co., State Troops: Capt. Charles A. Carroll

Artillery Force:

Ft. Smith Co., State Troops: Capt. J. G. Reid's Battery of four guns, 73 men. Capt. James G. Reid,  
Lt. A. A. Wilcox, Sgt. \_\_\_\_\_ Loudermilk. Two sections, all six pounders.

Pulaski Co., State Troops: Capt. William Woodruff's Battery of six guns, 101 men. Three sections,  
all six pounders.

**General History**

Arkansas, like Missouri to the north (and from which Arkansas Territory had been formed in 1819), remained only lukewarm throughout the sectional crisis months of 1860-1. A brief look at the state's history is in order to appreciate the dilemma facing the "Rackensack" state. (This tag on Arkansans was generated during the War with Mexico, when a regular army officer commented on Col. Archibald Yell 's Cavalry Regiment after their disappointing performance on the field at Buena Vista: "They may not fight so well, but they can 'rack and sack' a Mexican town faster than any other troops.") The state was evenly divided; both along political and economic lines. If a line were drawn northeast to southwest through the center of the state (with Little Rock at its center), those living in the eastern flatlands with its larger plantations favored secession, while those of the mountainous west rejected such proposals, as often as not. The latter region had been occupied by people coming from the upper tier of southern states and the north, while those to the east had arrived principally from the deep southern states.

During the early 1830s the state grew rapidly, so much so that by 1836 it appeared poised for statehood. But the sectional crisis had already assumed such proportions nationally, that in order for Arkansas to be accepted, the north demanded and gained the admission of Michigan. However, Arkansas saw admittance first, entering the Union as as "slave state" in '36. Political intrigue dominated the state before, during and after war, on account of the ideological split between the southeastern and northwestern factions, and it would act



to delay the secession of the state in 1861. A specially called convention assembled in the early months of that year, but after tumultuous, and often acrimonious debate, the northwestern faction led by Jesse Turner of Van Buren averted secession for the time being. Agreements called for the state to debate the issue before voting its conscience the following August, provided that nothing interfered beforehand to force the issue!

In consequence of the firing on Ft. Sumter, unfortunately, President Lincoln called upon the state of Arkansas to furnish troops to "suppress a rebellion" of certain Southern states. This the governor, Henry M. Rector, flatly rejected, repudiating Lincoln's claims; and threatening that the state would "if forced," align itself with the South rather than having to "fire upon its brothers and sisters." In early May the state's convention reassembled at Little Rock, and quickly approved a secession ordinance on May 7, 1861. Governor Rector already had control of the Arsenal at Little Rock, and determined to arm and equip all of the state's troop[s] before disposing otherwise of that resource to other parties. Thus, the average soldier in the Army of Arkansans would be rather well supplied, in contrast to those volunteering for regular Confederate service, from the same state.

In a letter to President Davis on May 13, newly appointed Brig. Gen Pearce advised the Chief Executive that he had been commissioned commander of a force to be placed on the "western frontier," and would "his excellency ... send us 500 copies of 'Hardee's Tactics'," so that the men could be instructed. T.C. Hindman (trying to raise a regiment for Confederate service) complained that "state authorities refuse arms of any kind, retaining them for militia," asking on May 29, if the government might send his men some "blue jeans for their shirts and pants."

Governor Rector advised the Confederate War Dept. that he would turn over the State Troops already raised "provided that the force, including arms," secure ample protection and security to Arkansas in the future." Unbeknownst to Pearce and his men, the Articles of Transfer to the Confederate service were signed at Little Rock on July 17, having previously been endorsed by Richmond authorities. They would yet be ignorant of this at Wilson's Creek, and most probably did not learn of this prior to being disbanded in mid-August. This they did without authority!

Brig. Gen. Benjamin McCulloch of the C.S. Army, assumed command of the forces concentrating on the western boundary of Arkansas at Fort Smith, in late May. Pearce's Brigade "agreed to cooperate" with McCulloch's small army, in effect doubling the number of troops. By June, McCulloch had begun to move north, where he would attempt to succor Maj. Gen. Sterling Price's Missouri State Guard, then in retreat to the southwestern portion of that state. On July 18, McCulloch would report that: "General Pearce, commanding the Arkansas State forces of the Western Division, is still at Camp Walker, near Maysville, Ark., with 2,200 men." From Cassville, Mo., on July 30, McCulloch wrote Richmond to send him "a large amount of flint-lock musket cartridges, percussion musket cartridges for percussion and minie muskets, and caps, and such cannon ammunition for field pieces as can be spared." Pearce's Brigade was then at Cassville, along with the regular C.S. forces, awaiting the rendezvous with Price's Missourians.

Just prior to the Battle of Wilson's Creek, Price linked his much understrength "divisions" to McCulloch, and they prepared to march out to meet Brig. Gen. Nathaniel Lyon's army, thought to be then at Springfield. Plans on Aug. 9 called for a general advance on that city from the vicinity of Wilson's Creek (ten miles southwest), where McCulloch and Price lay encamped. But threatening rainclouds led to a postponement (many of the MSG and CS forces having no cartridge-boxes), and the men lay down at midnight instead, dreaming on the likelihood of battle the following morn. (There are any number of volumes on Wilson's Creek to read, including that of Robert N. Scott, et al, The War of the Rebellion: A Compilation of the Official Records of the Union and Confederate Armies. 128 vols. Washington: U.S. Govt. Printing Office. 1880-1901. See vol.S 3, pp. 120-126, 576-7.588-9, 594-5, 608-11, 623, & 690. This is where the above quotations can be found. Also, one might find useful and easier to come by, the article, "Arkansas Troops in the Battle of Wilson's Creek," by N. B.Pearce, found in Battles and Leaders. 4 vols. Rpt. NY: 1956: vol. 1: 298-306.)

The actions and dispositions of the Arkansas State troops, with additional information will be forthcoming as a part of the final package sent to your respective commands.





## My Dear Husband,

This year at Wilson's Creek we would like to organize a mail call. These letters would come from as many of the real wives and family members of the Texas Rifles as would like to participate, with others provided the Tyler region civilians.

A good basic letter requires very little specific knowledge of the Civil War period--in fact, it would vary little from a letter sent to the Persian Gulf today. A basic letter might include how much the soldier is loved and missed, news about the children, reports on loved ones' health, a little general local gossip, possibly a report on whether the crops were doing well or not, and a request for more letters.

An expanded letter might reflect a little research done on the early Civil War and conditions in the South at that time. The Texas Rifles will be portraying Arkansas militia in this battle, so letters could be sent from any town or county in that state. Southern enthusiasm was high, the war was thought to be a short one, and shortages had yet to be felt by most of the people.

Another thing to consider is the character that your soldier has assumed. Is he married? Is he a semi-literate farmer, a planter, an attorney, or a merchant? This will help you form your letter. Quite a few of the Texas Rifles filled out questionnaires for character packets at Texian Market Days that will include this sort of information. The letter writer could be a wife, sweetheart, sister, aunt, cousin, mother, grandmother, or daughter, or take a male character for the purpose of this letter and be a proud father or perhaps a business associate. The writer could be anyone from an illiterate who has asked someone else to write the words, to the graduate of a fine finishing school who knows a little French and quotes poetry. An especially industrious person could even write more than one letter from different people, or enlist the aid of one of the soldier's children to also write. The letters could be funny or sad, encouraging or discouraging, very affectionate or prim.

Paper had not become scarce yet so the letter could be written on fine paper with an ink pen if the sender were prosperous, or with pencil on Big Chief Tablet paper if the soldier's family ran hogs in the hollers to make ends meet. Avoid ball points, felt tips, and typewriters. Spelling, grammar, and capitalization can be creative, and penmanship could vary from crude printing to fine Spencerian script. Envelopes can be plain, or better yet, handmade. Date the letters anywhere from one to three weeks prior to August 10, 1861, and address the envelope to:

Pvt. John Doe  
3rd Arkansas State Vols.  
Pearce's Brigade  
Camp Walker  
Maysville, Ark.

The Texas Rifles will be the 3rd, 4th, and 5th Arkansas State Volunteers, so the letter could be sent to any of those units. Actually, by July 31st the Arkansas troops were advancing to Cassville, Missouri, but the news would not have had time to get home and then get a letter back to the front before the battle. You might also include in the envelope a pressed flower, a lock of hair, or a small piece of ribbon to remind your soldier of the ones he left behind.

These letters will not be graded for any kind of authenticity. In fact, unless your soldier so chooses, no one else will see their contents at all. All sealed letters should be either sent in advance to Jo McMahan, 2219 Heather, Tyler, TX 75703, or sent with the soldier to the muster or the battle. Anyone who would like a letter but who has no one interested in writing should bring a profile to the muster or send it with any preference on the assumed letter writer as soon as possible to Jo McMahan at the above address. She or one of the other Tyler region civilians will try to prepare a letter in time to be distributed at the Battle of Wilson's Creek in August.



25 May 1861

~~GENERAL ORDERS,~~ §

No. /

To All Battalion Commanders:

By order of the War Department, this command has been advised to make itself ready for movement in the field and in operations against the enemy.

1). All Battalion commanders and their field officers should insure that their respective commanders should be well schooled in the evolutions of the line and be able to function as a part of this brigade.

2). All Battalion commanders and their field officers should insure that their company commanders have trained their respective companies in both the school of the soldier and battalion and also are well schooled in the evolutions of the line. They should also insure that the company commanders have trained their men in skirmish drill and should be able to execute those duties, if needed, in the field.

3). In order to help assure compliance with the above directives, each battalion commander is directed to establish within their field & staff a second majors position. Nominations to this position should be forwarded to Brigade Headquarters as practicable.

The liberation of Missouri from Unionist hands is upon us. Let us resolve to insure that their brigade will be able to offer its highest services to our cause.

By command of

General J. H. KING

Assistant Adjutant General

*[Handwritten signature]*  
A. D. G.

~~GENERAL ORDERS,~~ §

No. *2*

Head Quarters 1st Confederate Brigade

*25 May 1861*

To All Battalion Commanders:

In the course of military operations it is extremely important that a constant source of information be forwarded to this command in order that it might function to its maximum ability.

1) Morning reports need to be filed at the appropriate time to the brigade adjutant. It is the responsibility of the battalion adjutant to insure that this takes place without fail, either in the camp or in the field. It is the responsibility of the company commander to supply his own forms for morning reports.

2) Ammunition expended and on hand reports need to be filed after an action without fail. It is the responsibility of the battalion adjutant to insure this takes place and turn said reports into either the brigade ordnance officer or adjutant.

By command of

General J. H. KING

Assistant Adjutant General

*L. DeLong*  
AAAG



WILSON'S CREEK UPDATE 06/04/91

Below are key points that have been resolved concerning the event:

1. Sat. Morning Tactical has been cancelled
2. ....All Weapons subject to inspection by our Brigade A.I.G. before they may be used in the battles.
3. All infantry units that are not assigned, units not belonging to the Division, will be assigned to a Brigade for the weekend, No exceptions! Rick Somers, the Divisional AAG is responsible for this assignment, he will work through the Brigade AAG for this purpose.
4. Horse Drawn "Mountain Howitzers" will be allowed to participate in both the event and in the battles. (per Jay Jackson, telephone conversation of 5/22/91).
5. We should shoot for all registration to be sent to Wilson's Creek people for the Division by no later than July 15th. This fee will remain \$9.00 per man. Refer to your Brigade Commander as to how this should be collected and forwarded.
6. They are furnishing the following:
  - a. 7 5000 gal stainless steel tankers for water.
  - b. Hay
  - c. Straw
  - d. Animal feed
  - e. Wood
  - f. Showers? (location at this time unknown)
  - g. Possible powder ration for Artillery.
  - h. Several "Horse Troughs" for watering the animals.
  - i. Three scenario battles concerning Wilson's Creek.
  - j. Battlefield adjacent to National Battlefield; area layout is very close to actual battle.
7. Union participation appears to be around 600-800 men at this time. (Western Brigade is attending in strength).
8. Camps will be laid out in typical military fashion. (Maps will be furnished later).
9. Camp areas will be "'sprayed" before the event to cut down the critters.
10. Sutlers will be located between the two armies.

Steve Wakefield  
Sgt. Major  
Moore's Battalion

SHOE





## GENTLEMEN OF MOORE'S BATTALION, 1ST CONFEDERATE BRIGADE

"From a fellow member of this Battalion and 1st Confederate Brigade"

I address you as the finest group of officers and men that exists in the current re-enactment hobby. I call on you to work harder, work longer on getting the Battalion moving in a direction that we should be moving at this stage of our life.

That direction is self-sufficient in its structure, strong in its organization, depth in its ranks and by all means, authentic in its mind set and attitude. An asset to our Brigade and to the Division and for sure ourselves.

We must build our organization from within, then project our image to others for them to follow our lead or join our ranks. We must communicate with units that are outside our organization to influence them to join us in our goals that we have stated above.

Far too long have we waited for others to choose our direction, for too long have we waited on others to push us toward our goals, we must and will control our destiny.

The units that make up this Battalion make up almost 80 years of collective experience and longevity. These units for years have set the pace for the rest, plowed new ground, set the example for others to follow.

We must do this again, and we can, and we will!

Look around you, the men you see here are the best, but they did not get to that point, waiting for others, they worked hard to keep authenticity improving, esprit-de-corps in the ranks.

Our officers are the most talented, most experienced in the hobby. Col. Moore, long time member of the Guard and officer of this Battalion from its beginning. Major Pierce and Major Siegel, are from the very pillar of this hobby, Cleburne's and the Confederate Guard. Some of the best operational and tactical officers that are on the field now.

I am by no means advocating that we become non-team members in the Division or Brigade, I am saying lets take the lead again, don't wait on people to "make our fun for us". Lets push the Brigade, Division for a change!

This means when one of our officers is called away for other duty, someone must pick up the ball and run with it for him while he is gone. You unit commanders must communicate with your Battalion Officers. If you're not getting the word, let them know, or volunteer yourself to get the word out to your Battalion.

Work with your Battalion leaders and come up with new ideas to improve the Battalion, ways to increase and strengthen our numbers without losing our authenticity levels or demeaning our status.

The guy in the rear ranks must work with his leaders in improving the events, and the impression of the Battalion, Brigade, and the Division. He must communicate with his leaders his thoughts, the direction he wants to move the Battalion.

But he must also put trust into his leaders that they would make the correct decisions about his concerns, and that they will protect him from "unfun" events and happenings.

I guess the bottom line is that we must become a tight team, working, communicating together for us to reach our goals. "Get the job done first", "get it done correctly" allowing our officers to lead for us.

Let let them say, "Look that's Moore's Battalion, the best in the field!"

As always, I always remember my favorite Generals motto, "Forward, for we know no other".

Thank you,

High Private in Cleburne's,  
alias Divisional Commander  
Al Gatlin

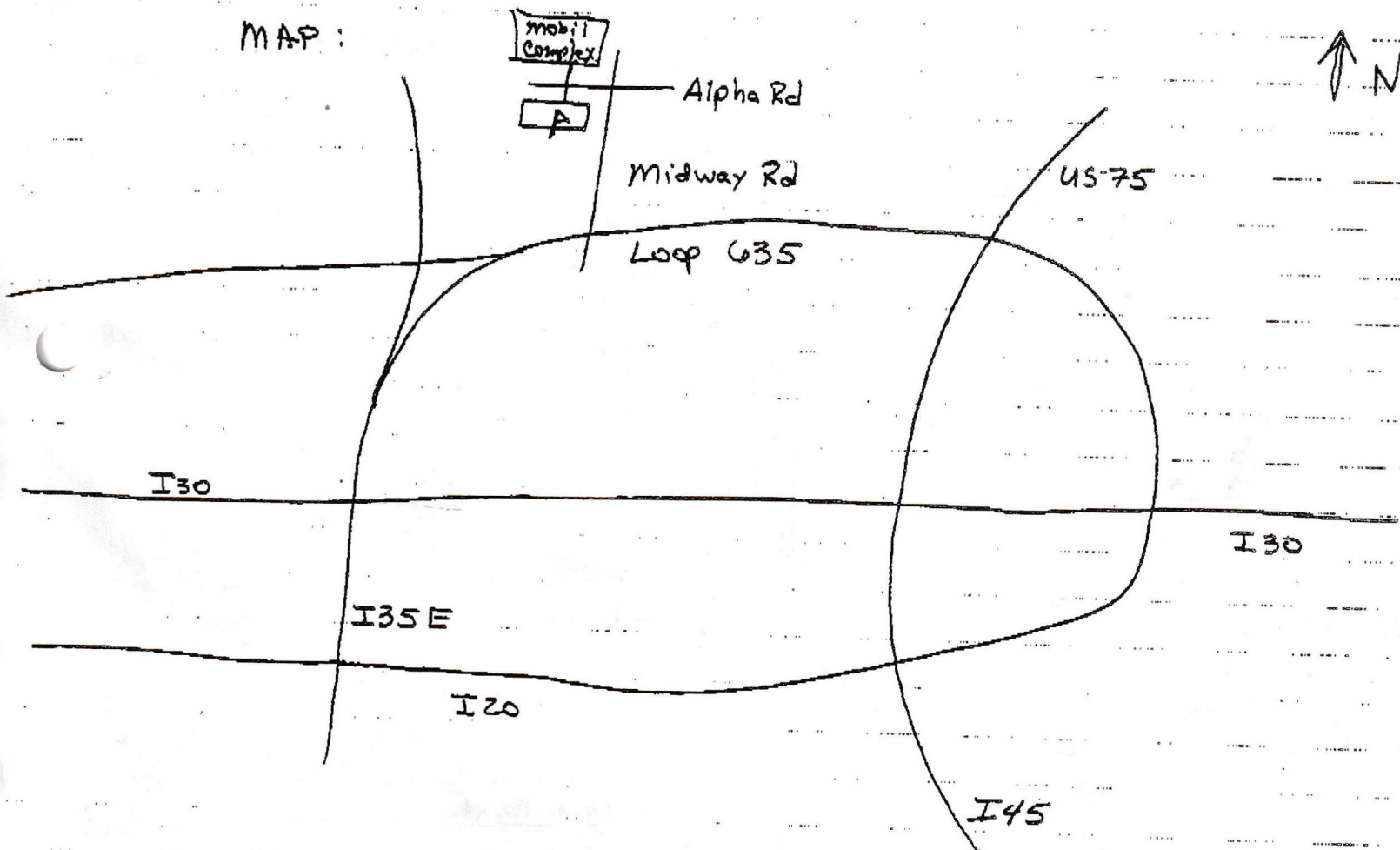


# DALLAS AREA

## BUS STOP

Location: IRS Federal Bldg.  
4050 Alpha Rd  
Farmers Branch, TX 75244

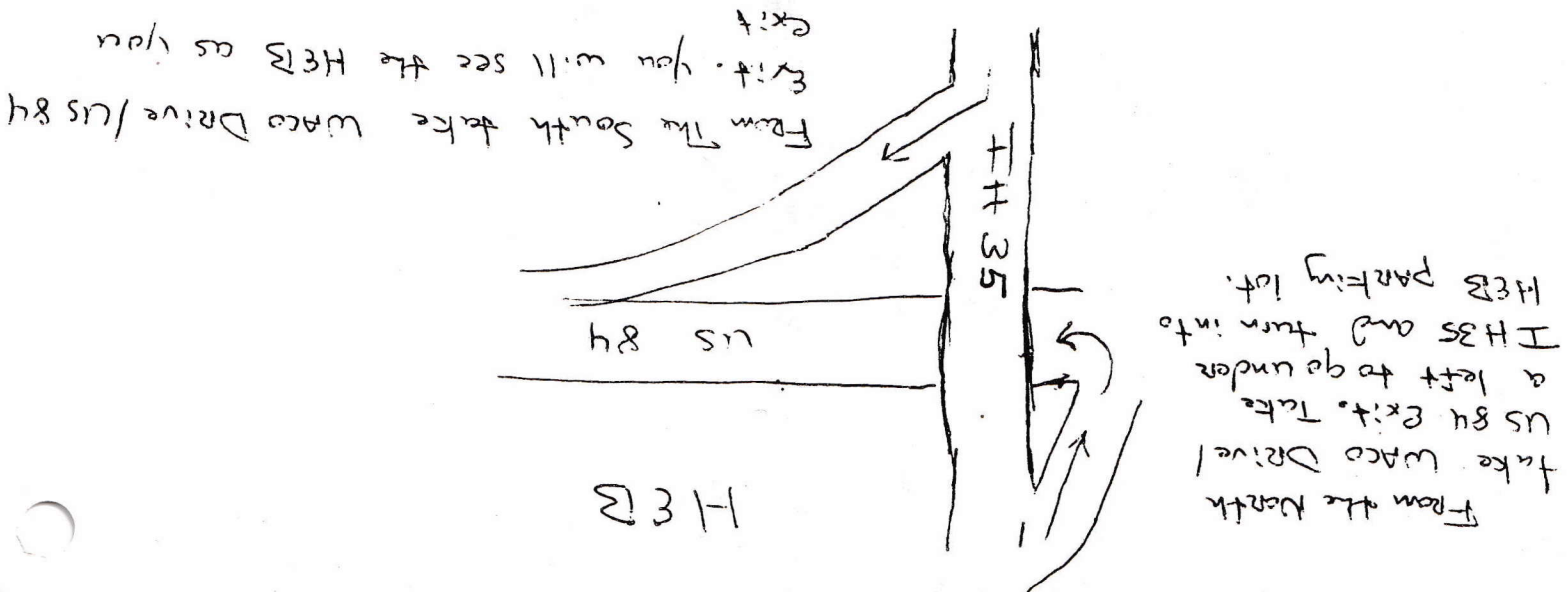
MAP:



Once on Midway Rd, turn left on second light (Alpha Rd).  
Turn left at second available turn (across from Mobil). Federal Bldg on immediate right. It is a tall bldg with 2-story car garage and U.S. flag pole. Meeting area is by flag pole in front of bldg.



If you are meeting the Bus in Waco:



If you are meeting the Bus in Austin:

